

Pollinating the Peninsula - The half million flower challenge!

Take part in this year's St Davids big Nature Recovery Challenge and help us put St Davids on the map as Wales's first Bee Friendly City. The pack of wildflower seeds attached to the Newsletter will allow you to create your own 5m mini meadow. If you don't have a garden, don't worry – you can make a meadow in a flowerpot – just use fewer seeds. If you have spare seeds, please don't throw them away. Give them to a friend or drop them back at The Bug Farm so Eco Dewi can sow them elsewhere.



Why?

Nature is in trouble and Britain is one of the most nature-depleted countries in the world. But we can help. The area of gardens in Britain is greater than the area of nature reserves! In a single day in summer, your 5-metre mini-meadow could contain almost 600 flowers and support almost 120 bees and other insect pollinators! **If 1,000 St Davids residents created a 5-metre mini meadow, we could create a habitat containing over half a million flowers which could support almost 120,000 bees!**



What's in the pack?

Each pack contains a mixture of colourful **annual and perennial seeds**. The annual plants bloom in the first year and look bright and colourful. The perennials take a year or so to look their best, but these create your long-lasting wildflower meadow.

How?

1. Choose your spot = sunny + free from 'weeds'
2. From March-May, create an area of bare soil in your chosen spot
3. Mix your seed well with a couple of handfuls of dry soil or sand
4. Sprinkle your seed and soil/sand mix over the area of bare soil
5. Use your feet to walk over the seed or press it in with your hands.
6. That's it – you are now the proud owner of a mini-meadow!



IMPORTANT!

Your seed pack contains a mix of native and agricultural species, so do not sow it anywhere other than in your gardens!



MEADOW MANAGEMENT

Meadows need management. You need to cut your meadow and remove the cuttings from Aug-Oct each year. See the great guide below from Plantlife. **Top tip:** You can collect seeds from the annual species and sow them next year in another area of bare soil!

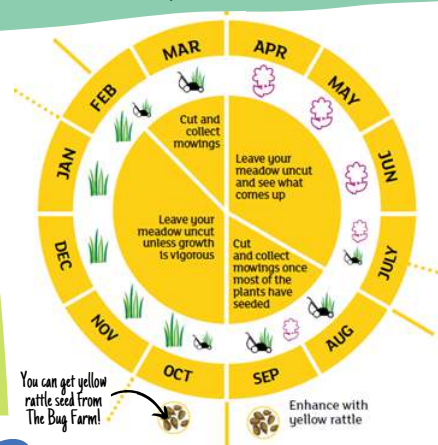
GET INVOLVED

Get involved in our citizen science project. On a sunny day in summer, count the total number of flowers in your mini meadow and, if you have a lawn, count the total number of flowers on the same sized area of your lawn too. Take a photo of both and **share your photos with us via the Pembrokeshire Meadows Group Facebook page**. Tell us the number of flowers in each area and the size of your mini meadow. Don't forget to tag **@thebugfarmUK** and **@EcoDewiGroup** too and **#PollinatingThePeninsula** **#MiniMeadows!**



TELL THEM ALL ABOUT IT

When you have sown your meadow, pop to The Bug Farm during opening hours to pick up a **Pollinating the Peninsula garden sign** that you can fix to a stake in the meadow or even to your garden gate to show your neighbours that you are helping pollinators (and not just forgetting to mow your lawn). If you have an Eco Dewi blue heart, the sign will fit nicely in the middle of the heart! Oh, and don't forget **#NoMowMay** this year too!



Graphic from Plantlife



For more info, a pollinator spotter guide, fact sheets, videos & full species list, visit: thebugfarm.co.uk/research-farm/pollinating-the-peninsula/

